



Kinotech Industry

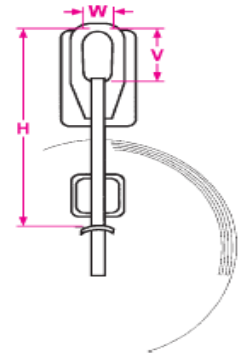
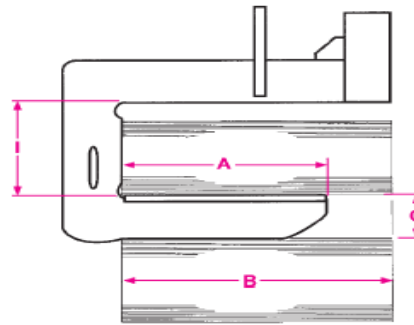
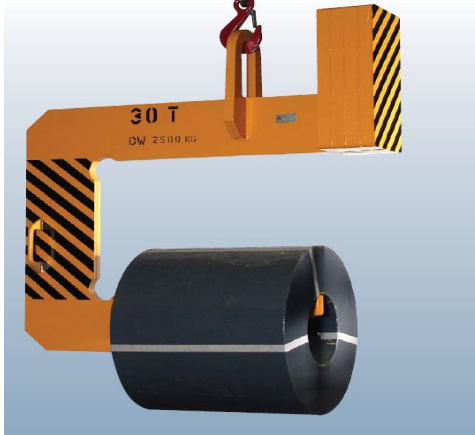
Galati - Romania
TEL./FAX: 0236-466.372
TEL./FAX: 0236-313.013

www.kinotech.ro

E-mail: office@kinotech.ro
Mobil: 0768-463.636
Mobil: 0723-694.919
Mobil: 0765-998.277
Mobil: 0766-360.062

Carlig Tip C

- Material : Otel inalt aliat
- Standard : DIN 15026
- Produs finit : vopsit



Tabel dimensiuni

Sarcina nominala (t)	B	A	C	I	H	VxW	Greutatea neta (Kg)
0.5	150-300	225	60	400	520	100X50	12
0.5	250-500	375	70	400	520	100X50	20
0.5	375-750	565	80	400	520	100X50	28
0.5	500-1000	750	80	400	520	100X50	40
1	150-300	225	75	450	600	120X55	20
1	250-500	375	80	450	600	120X55	30
1	375-750	565	100	450	600	120X55	64
1	500-1000	750	110	450	600	120X55	80
2.5	150-300	225	90	500	680	150X75	35
2.5	250-500	375	110	500	680	150X75	60
2.5	375-750	565	135	500	680	150X75	80
2.5	500-1000	750	140	500	680	150X75	120
5	275-750	565	160	550	780	190X90	165
5	500-1000	750	180	550	780	190X90	220
5	625-1250	940	200	550	780	190X90	280
5	750-1500	1125	220	550	925	190X90	435
7.5	375-750	565	200	550	830	230X110	220
7.5	500-1000	750	230	550	830	230X110	290
7.5	625-1250	940	230	550	830	230X110	400
7.5	750-1500	1125	250	550	830	230X110	490
10	375-750	565	230	600	910	250X120	270
10	500-1000	750	230	600	910	250X120	475
10	625-1250	940	270	650	960	250X120	500
10	750-1500	1125	290	650	960	250X120	680
15	500-1000	740	290	750	1120	300x135	600
15	625-1250	940	290	750	1120	300x135	780
15	750-1500	1125	320	700	1070	300x135	1000
15	1000-2000	1500	350	700	1070	300x135	1500
20	500-1000	750	300	850	1310	380x180	850
20	625-1250	940	320	850	1310	380x180	1000
20	750-1500	1125	330	800	1260	380x180	1250
20	1000-2000	1500	370	800	1260	380x180	1700
25	625-1250	940	360	850	1400	450x210	1200
25	750-1500	1125	360	850	1400	450x210	1500
25	1000-2000	1500	400	850	1400	450x210	2000
30	750-1500	1125	380	950	1550	500x220	1900
30	875-1750	1320	400	950	1550	500x220	2100
30	1000-2000	1500	420	950	1550	500x220	2450