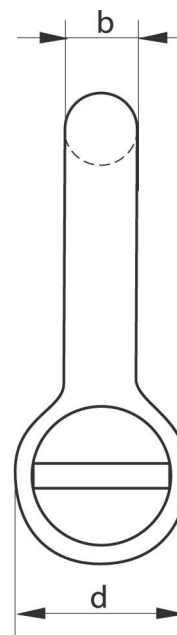
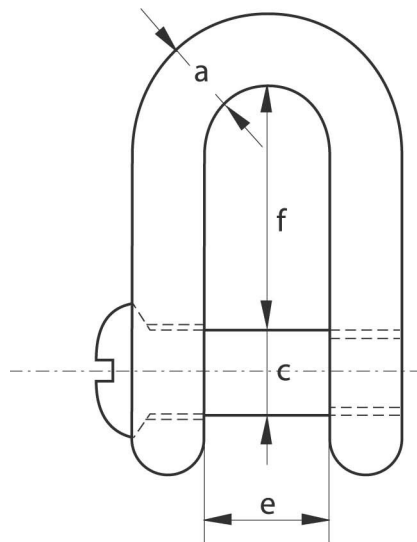




## Chei de tachelaj drepte tip B dupa DIN 82101 tip G-3352

- Material : otel inalt aliat, **Grad 4**
- Factor de siguranta : MBL egal cu 4xWLL
- Standard : in general cu DIN 82101 tip B
- Produs finit : Galvanizat sau culoare naturala



no.	working load limit	thickness bow	thickness bow	diameter pin	diameter eye	width inside	length inside	weight each
	tons	a mm	b mm	c mm	d mm	e mm	f mm	kg
0.1	0.1	5	4	5	10	7	15.5	0.014
0.16	0.16	6	5	6	12	8	18	0.023
0.25	0.25	8	7	8	16	11	24	0.052
0.4	0.4	10	8	10	20	14	30	0.093
0.6	0.63	12	10	12	24	17	36	0.173
1	1	15	13	16	32	21	49	0.29
1.6	1.6	19	17	20	40	27	61	0.543
2	2	21	19	22	44	30	67	0.95
2.5	2.5	23	21	24	48	33	73	1.23
3	3.15	26	24	27	54	38	83.5	1.8
4	4	29	27	30	60	42	91	2.6
5	5	33	30	36	72	47	111	3.8
6	6.3	37	34	39	78	53	119.5	5.2
8	8	41	38	45	90	60	139.5	7.6
10	10	45	42	48	96	66	147	9.7