



**Kinotech Industry**

Galati - Romania  
 TEL./FAX: 0236-466.372  
 TEL./FAX: 0236-313.013

www.kinotech.ro

E-mail: office@kinotech.ro

Mobil: 0768-463.636

Mobil: 0723-694.919

Mobil: 0765-998.277

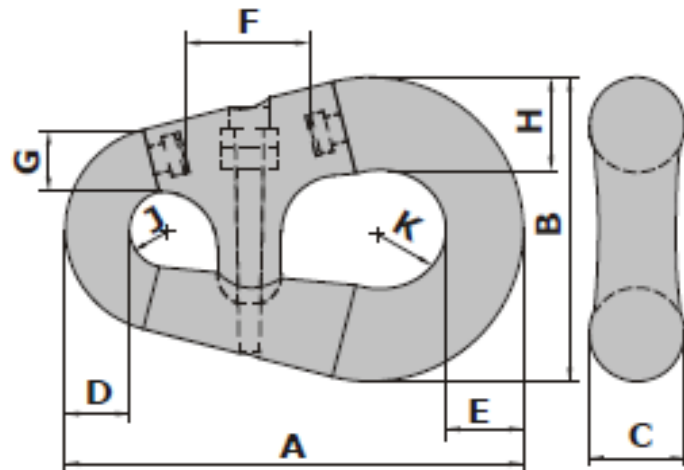
Mobil: 0766-360.062

## PEAR CONNECTING LINK TYPE SC4

Material: Fully forged steel R4

Finish: Painted

Certificate: Proofload, 3,1B material



| Art. no. | Type No. | Chain mm | A mm | B mm | C mm | D mm | E mm | F mm | G mm    | H mm    | J mm | K mm | Weight kg |
|----------|----------|----------|------|------|------|------|------|------|---------|---------|------|------|-----------|
| 40000104 | 4        | 32-40    | 298  | 206  | 59   | 40   | 48   | 83   | 40x44   | 56      | 26   | 43   | 13        |
| 40000105 | 5        | 42-51    | 378  | 260  | 76   | 51   | 64   | 100  | 51x60   | 74      | 32   | 52   | 27        |
| 40000106 | 6        | 52-60    | 454  | 313  | 92   | 60   | 76   | 121  | 62x73   | 88      | 37   | 64   | 49        |
| 40000107 | 7        | 62-79    | 562  | 376  | 117  | 79   | 95   | 149  | 85x79   | 111     | 48   | 76   | 94        |
| 40000108 | 8        | 81-92    | 654  | 419  | 133  | 92   | 124  | 149  | 111x102 | 130x133 | 54   | 79   | 149       |
| 40000109 | 9        | 94-95    | 692  | 435  | 146  | 98   | 130  | 159  | 124x137 | 141     | 57   | 83   | 236       |
| 40000110 | 10       | 97-102   | 889  | 571  | 190  | 121  | 165  | 190  | 130     | 181     | 73   | 108  | 386       |
| 40000111 | 11       | 103-108  | 940  | 610  | 203  | 127  | 175  | 203  | 156     | 200     | 76   | 111  | 418       |