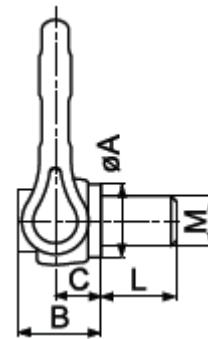
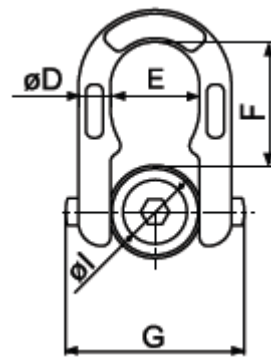




Rotating hoist ring, grade 8

- **Material** : alloy steel, grade 8, quenched and tempered
- **Safety factor** : MBL equals 5 x WLL
- **Finish** : painted red
- **Temperature Range** : up to +250°C (482° Fahrenheit)
- **Certification** : at no extra charge this product can be supplied with a works certificate, a 3.1 certificate and/or EC Declaration of Conformity
- **Note** : WLL indicated hereunder are given in the worst conditions of use, i.e. 90°



Dimensions table

Code	WLL	Ø ISO	Dimensions in mm									Hex Key	Torque N.m	BF t	Weight Kg
			t	mm	A	B	C	D	E	F	G				
ADA 8	0.40	M8 x 1.25	34	35	15	13	34	44	68	13	18	6	6.5	2.0	0.43
ADA 10	0.70	M10 x 1.5	34	37	15	13	34	44	68	16	18	8	13	3.5	0.43
ADA 12	1.00	M12 x 1.75	34	39	15	13	34	44	68	18	23	10	22	5.0	0.46
ADA 14	1.30	M14 x 2.0	34	41	15	13	34	44	68	21	23	12	35	6.5	0.46
ADA 16	1.60	M16 x 2.0	34	43	15	13	34	53	68	24	23	10	55	8.0	0.47
ADA 18	2.00	M18 x 2.5	34	45	15	13	34	53	68	27	28	10	80	10.0	0.47
ADA 20	2.50	M20 x 2.5	34	47	15	13	34	53	68	30	32	10	110	12.5	0.47
ADA 22	3.00	M22 x 2.5	49	69	26	20	53	70	105	33	33	14	150	15.0	1.85
ADA 24	4.00	M24 x 3.0	49	71	26	20	53	70	105	36	33	14	190	20.0	1.87
ADA 27	5.00	M27 x 3.0	49	65	26	20	53	70	105	40	36	14	280	25.0	1.93
ADA 30	6.30	M30 x 3.5	49	65	26	20	53	70	105	40	45	14	380	31.5	2.00
ADA 33	7.00	M33 x 3.5	65	83	35	29	72	100	146	55	50	19	520	35.0	4.90
ADA 36	10.00	M36 x 4.0	65	83	35	29	72	100	146	55	54	19	600	50.0	5.20
ADA 39	10.00	M39 x 4.0	65	83	35	29	72	100	146	55	54	19	870	50.0	5.30
ADA 42	12.50	M42 x 4.5	65	83	35	29	72	100	146	55	63	19	1000	62.5	5.50