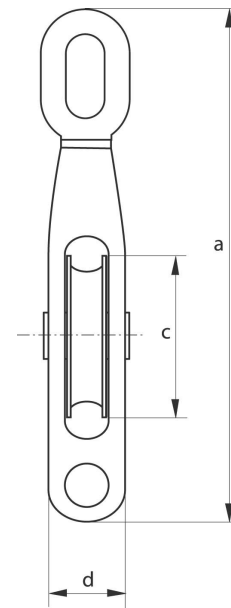
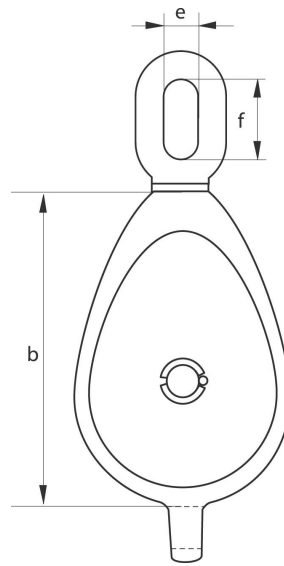




Galvanized malleable iron blocks code G-6917

- **Material** : galvanized malleable iron
- **Safety factor** : MBL equals 4 x WLL
- **Finish** : hot dipped galvanized
- **Certification** : test certificates can be supplied upon request
- **Note** : Working Load Limit is on the headfitting



working load limit	diameter rope	length	length	diameter	thickness	width inside	length inside	weight per pce
tons	mm	a	b	c	d	e	f	kg
0.4	12	164	118	45	39	14	25	0.7
0.8	16	232	158	62	45	18	37	1.4
1	18	270	178	82	49	24	52	1.8
2	24	340	233	98	60	30	59	3.7
2.2	28	350	246	111	64	30	59	4.9
2.6	30	390	280	136	68	30	59	7.2
3	32	420	314	159	75	44	70	10.8
3.6	34	460	350	174	75	44	70	12.6